



Mollis

ZIGERMMEET

**Die einzigartige Flugshow im Glarnerland
16./17. August 2019**



Air Crew Guide

1	SCOPE.....	3
2	DIRECTOR'S WELCOME ADDRESS.....	4
3	ADMIN DIRECTORY.....	5
4	CONTACT + INFORMATION.....	6
5	ARRIVAL PROCEDURE.....	7
6	FACILITY OVERVIEW.....	8
7	MAIN PROGRAM.....	10
8	MEDICAL ISSUES.....	10

9	DIRECTORY AIRBASE OPS.....	11
10	ARRIVAL.....	12
11	MOLLIS AIRPORT OVERVIEW.....	12
12	TEMPO RA MOLLIS.....	13
13	MOLLIS VISUAL APPROACH.....	14
14	APPCH CHARTS EMMEN (LSME).....	23
15	APPCH CHARTS ZÜRICH (LSZH).....	29
16	TECHNICAL SUPPORT.....	37
17	EMERGENCIES.....	37

18	DIRECTORY DISPLAY ORDER.....	39
19	INTRODUCTION.....	40
20	DISPLAY REGULATIONS.....	41
21	VIOLATION OF LIMITATIONS.....	43
22	DISPLAY PHRASEOLOGY.....	43
23	DISPLAY LINES.....	44
25	NOISE PROTECTION AREAS.....	46
25	HOLDING AREAS.....	47
26	DISPLAY FLOW.....	47
27	MAERCHLER FLYING DAYS.....	48
27	FREQUENCY PLAN.....	49
28	SPEAKER.....	49
29	AIR-TO-AIR PHOTOGRAPHY.....	50

1 SCOPE

The aim of this order is to establish common procedures and information to all participants in order to guarantee safe and expeditious air operations during ZIGERMEET19.

Air operations comprise arrivals and departures of all aircraft, including supporting aircraft, as well as rehearsal and display flights.

1.1 ADMIN

In the ADMIN part, you find details about diplomatic clearance, customs, arrival and departure admin, general facility layout, events, etc.

1.2 AIRBASE OPS

All approach and departure charts for alternate airbase Emmen [LSME] and airport Zurich [LSZH] are available in the AIRBASE OPS section.

1.3 DISPLAY ORDER

The display order guides you through all necessary regulations, limitations and instructions to conduct your flying display at ZIGERMEET19.

2 DIRECTOR'S WELCOME ADDRESS

Dear "ZIGERMEET19" Participants

The Zigermeet19 welcomes you in Switzerland. It is a great honor for us to host you as our guests for this event in our beautiful "Glarnerland". We are extremely delighted that so many military and civil organizations have accepted our invitation to take part in the static and flying displays. We hope that all participants and visitors have a successful and memorable meeting.

The attached Air Crew Guide provides all the necessary details and information you need to make your contribution to "ZIGERMEET19" as effective and safe as possible. It will also help you make your stay in Mollis comfortable. Please note that it is our firm intention to give the highest priority to flight safety. Therefore, we ask all, air and ground crew to carefully study this Air Crew Guide and respect the procedures described. It is each crewmember's responsibility to operate his aircraft in a safe and convenient manner. To have a clear understanding of operations and regulations, read the aircrew guide from cover to cover.

If you have any questions, please do not hesitate to send a mail to the responsible Display Director:

Gaetano Barberi: +41 79 294 66 56 / gaetano.barberi@zigermeet.ch

Dear performer, we are glad to have you with us on a remarkable flying event and thank you very much for your contribution to a safe flight demonstration.



Simon Maurer
Flight Operations



Gaetano Barberi
Display Director

3 ADMIN DIRECTORY

4	CONTACT + INFORMATION	6
4.1	Contacts	7
5	ARRIVAL PROCEDURE	7
5.1	GND Ops.....	7
5.2	Check-in at the Pilot's Welcome Desk in the VIP tent	7
6	FACILITY OVERVIEW	8
6.1	Tower / Welcome Desk	8
6.2	Briefing Location.....	8
7	MAIN PROGRAM	10
8	MEDICAL ISSUES	10

4 CONTACT + INFORMATION

4.1. Contacts

Post	Name / Remarks	Contact
Display Director	Gaetano Barberi	+41 79 294 66 56 gaetano.barberi@zigermeet.ch
AD Info Mollis	Marco Zollinger	+41 79 446 69 80 marco.zollinger@zigermeet.ch
Air OPS	Simon Maurer	+41 79 254 06 15 simon.maurer@zigermeet.ch
Gnd OPS	Richi Ehrensperger	+41 79 636 36 01 richard.ehrensperger@zigermeet.ch
FOCA	Jörg Thurnheer	+41 79 415 37 90 joerg.thurnheer@bazl.admin.ch
President	Franz Alberti	+41 79 623 68 32 franz.alberti@zigermeet.ch
Speaker	Roland Studer	+41 79 408 01 89 roland.studer@vtg.admin.ch
Emergency / Information	Simon Maurer	+41 79 254 06 15 simon.maurer@zigermeet.ch
Emergency / Organisation	Fritz Leuzinger	+41 79 357 30 58 fritz.leuzinger@zigermeet.ch
Security	Stefan Büsser	+41 79 820 51 82 stefan.buesser@zigermeet.ch
Police		117
Fire brigade		118
REGA		1414

5 ARRIVAL PROCEDURE

5.1 GND Ops

As soon as you shut down your engines, our ground support team will show up on the parking position. Discuss your technical needs (fuel, fluids, tools etc.) with our maintenance specialists.

5.2 Check-in at the Pilot's Welcome Desk located in the VIP tent

Upon your arrival in Mollis contact the PILOT'S Welcome Desk in the VIP tent where you will receive actual information and an envelope containing:

- Participant passes (to be worn on site all the time)
- Meal vouchers
- Information on accommodation (if applicable)
- Information on transportation (airshow site - hotel and v.v.)
- Information on display schedule

Following documentation must be available for inspection upon request by the display director and/or representative of the FOCA:

- Pilot license
- Pilots log book to prove currency
- Display authorization or exemption
- Aeroplane insurance certificate (third party liability)
- Airworthiness documents

We will reconfirm the timing for the flying rehearsal and the display with you.

Probable issues with internal team frequencies will be discussed and solved.

Pilots shall use their aircraft type as the call sign. In case of confusion, a different call sign will be chosen on agreement with ATC.

6 FACILITY OVERVIEW

6.1 Tower / Welcome Desk

The Tower / Welcome Desk provides all necessary information concerning flight ops in Mollis.

6.2 Briefing Location

The airshow display director will give a briefing on each day of the airshow. It's attendance is mandatory for each display pilot (team leader for display teams). The briefing will be held in the Kopter building at:

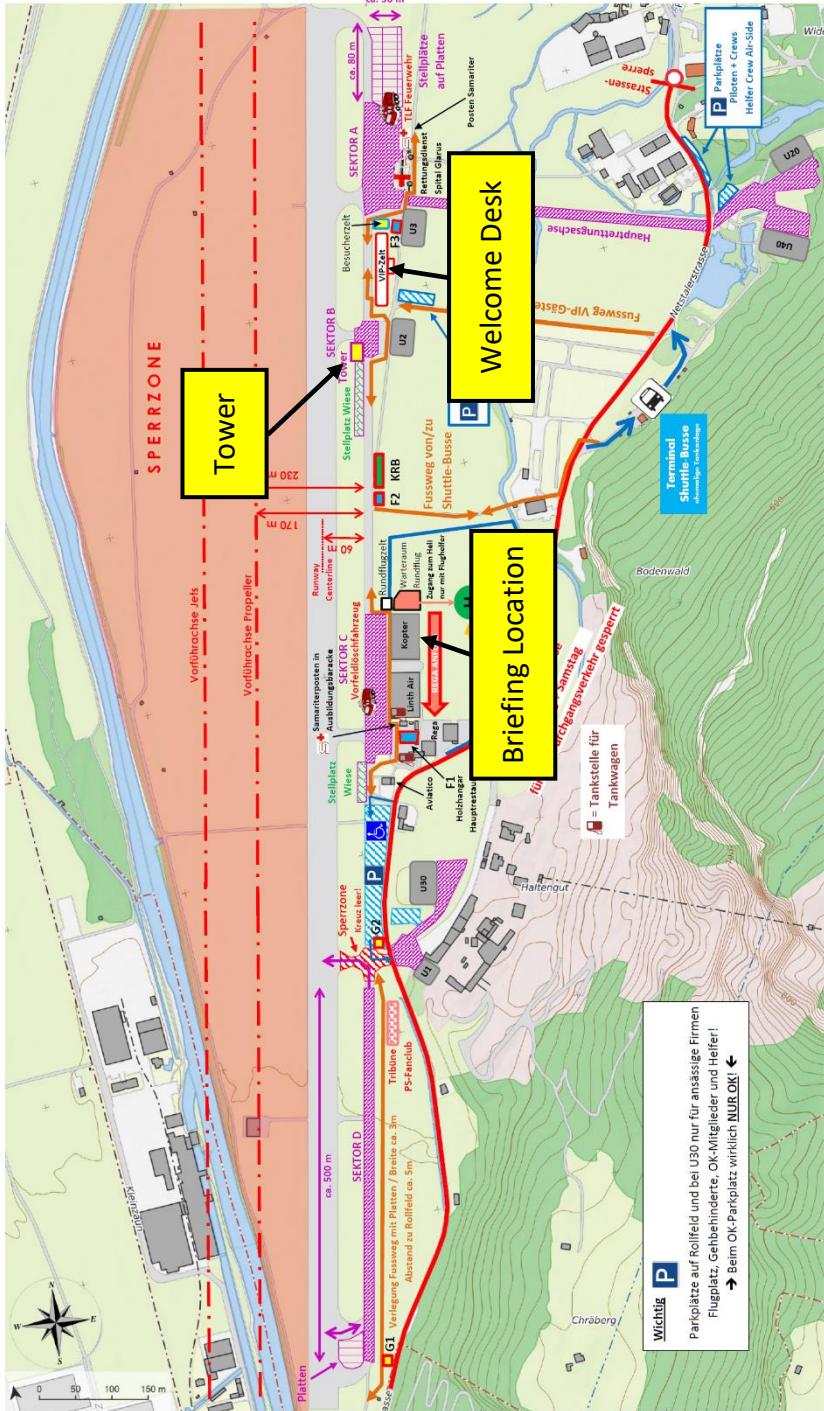
Friday: 12:00 LT
In case of arrival after 12:00 LT contact display director

Saturday: 08:30 LT and 12:30 LT

Noncompliance will automatically ban the respective pilot from participation at the airshow.

Debriefing:

If deemed necessary by the FOCA or Display Director, a debriefing will be given to the pilots concerned.



Tower

Welcome Desk

Briefing Location

Wichtig P
 Parkplätze auf Rollfeld und bei U30 nur für ansässige Firmen
 Flugplatz, Gehbehinderte, OK-Mitglieder und Helfer!
 → Beim OK-Parkplatz wirklich **NUR OK!** ←

Stellplätze Tag + Nacht
 Bewachung durch Security

Version: 06.04.2019 / FLE

7 MAIN PROGRAM

Local Time (LT) = UTC + 2 HRS

Date	Event	Remarks
Thu 15 th Aug	Fly in	After 13:00 LT
Fri 16 th Aug	Fly in Training	Till 10:00 LT After 10:00 LT
Sat 17 th Aug	Display	Entire Day No Take off between 12:00-13:00 LT
Sun 18 th Aug	Fly out	After 11:00 LT
Mon 19 th Aug	Fly out	09:00 LT till 13:00 LT

8 MEDICAL ISSUES

CASEVAC

In case of a serious injury or accident, there is a rescue helicopter (REGA) on station. It will be able to take-off within 5', providing medical evacuation even during an ongoing air display.

9 DIRECTORY AIRBASE OPS

10	ARRIVAL	12
10.1	General.....	12
10.2	Visual approaches	12
10.3	Alternate airfields.....	12
11	MOLLIS AIRPORT OVERVIEW	12
12	TEMPO RA MOLLIS	13
13	MOLLIS VISUAL APPROACH	14
14	APPCH CHARTS EMMEN (LSME)	23
15	APPCH CHARTS ZÜRICH (LSZH)	29
16	TECHNICAL SUPPORT	37
17	EMERGENCIES	37
17.1	General instructions.....	37
17.2	Prepared Emergency	38
17.3	Unprepared incidents	38
17.4	Ambulance / First aid	38

10 ARRIVAL

10.1 General

Arrival days: Thu, 15th Aug after 13:00 LT and Fri, 16th Aug till 10:00 LT

10.2 Visual Approaches

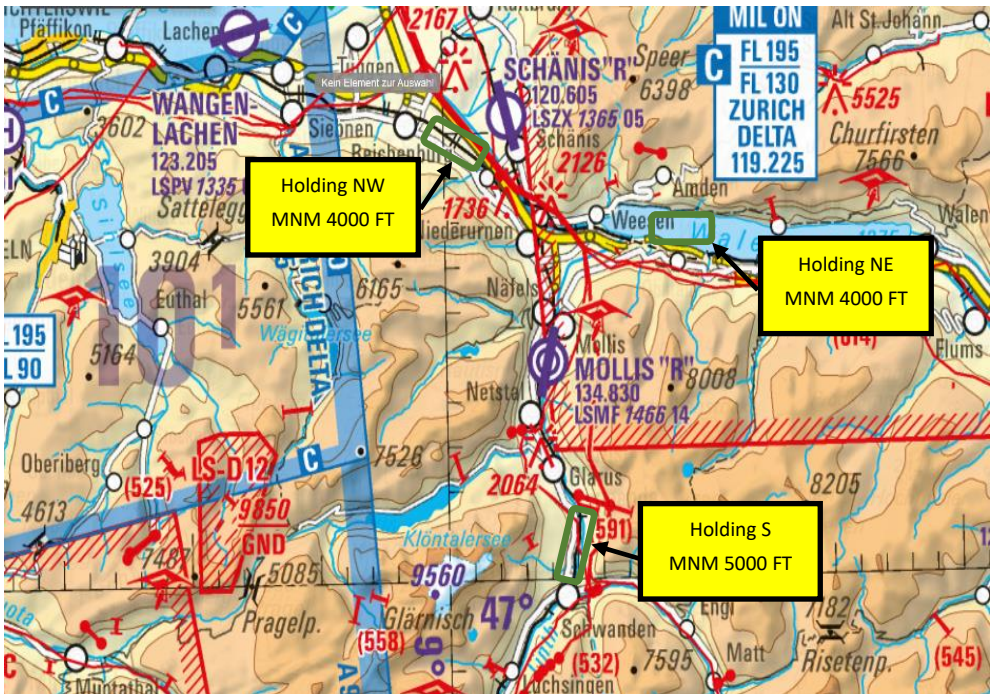
Use the published VFR routes and entry points below.

10.3 Alternate Airfields

Alternate airbases are EMMEN (LSME) 32NM/Bearing 270°.

Civil Airports Zürich (LSZH), Geneva (LSGG) and Bern (LSZB).

11 MOLLIS AIRPORT OVERVIEW



12 TEMPO RA MOLLIS

On Friday 16th and Saturday 17th of August 2019, a temporary restricted area will be activated for the Zigermeet19.

Position: Circle of 10km radius, centred at ARP LSMF (WGS84: 47°04'45"N / 009°03'54"E, ELEV 1470FT)

Vertical: NO RESTRICTIONS APPLY BLW 800FT AGL N OF HIGHWAY A3. LIMITED TO WEST BY AWY A9.

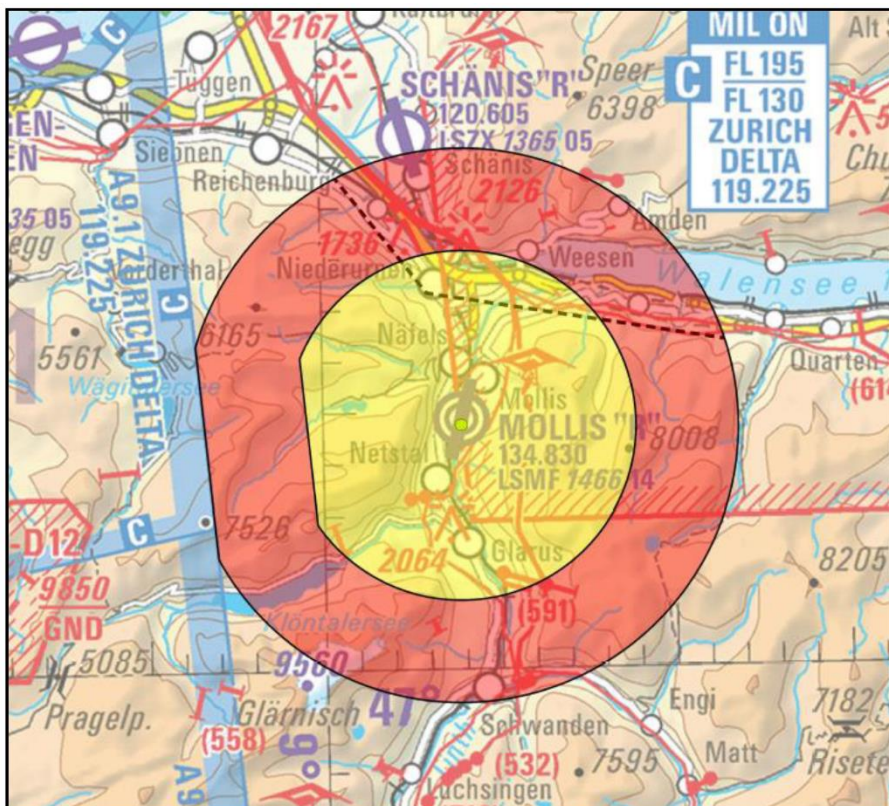
Lower Limit: GND / 800ft AGL N Highway

Upper Limit: FL130

Activation: 16th and 17th August 2019, daily between 0900LT-1200LT

16th and 17th August 2019, daily between 1300LT-1800LT

Within the red area and the part of the yellow area north of the dotted inner line, all display teams shall apply Standardized European Rules of the Air (except Patrouille Suisse Team of Swiss Air Force).

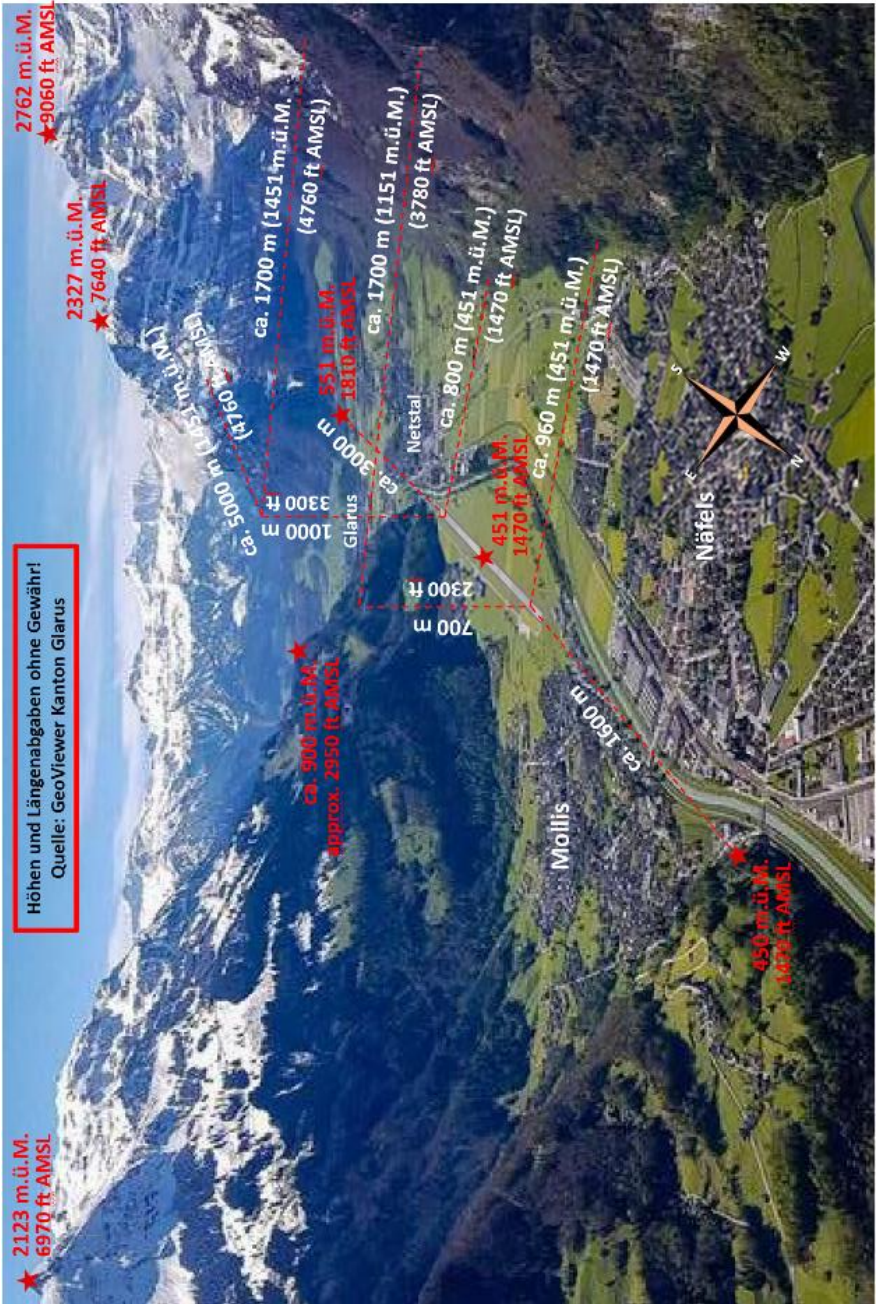


AIRBASE OPS

TEMPO RA Mollis

13 MOLLIS VISUAL APPROACH

AIRBASE OPS




Mollis LSMF
ELEV 447m/1470ft

MMN ALT
4'000 ft

3'000 ft AMSL

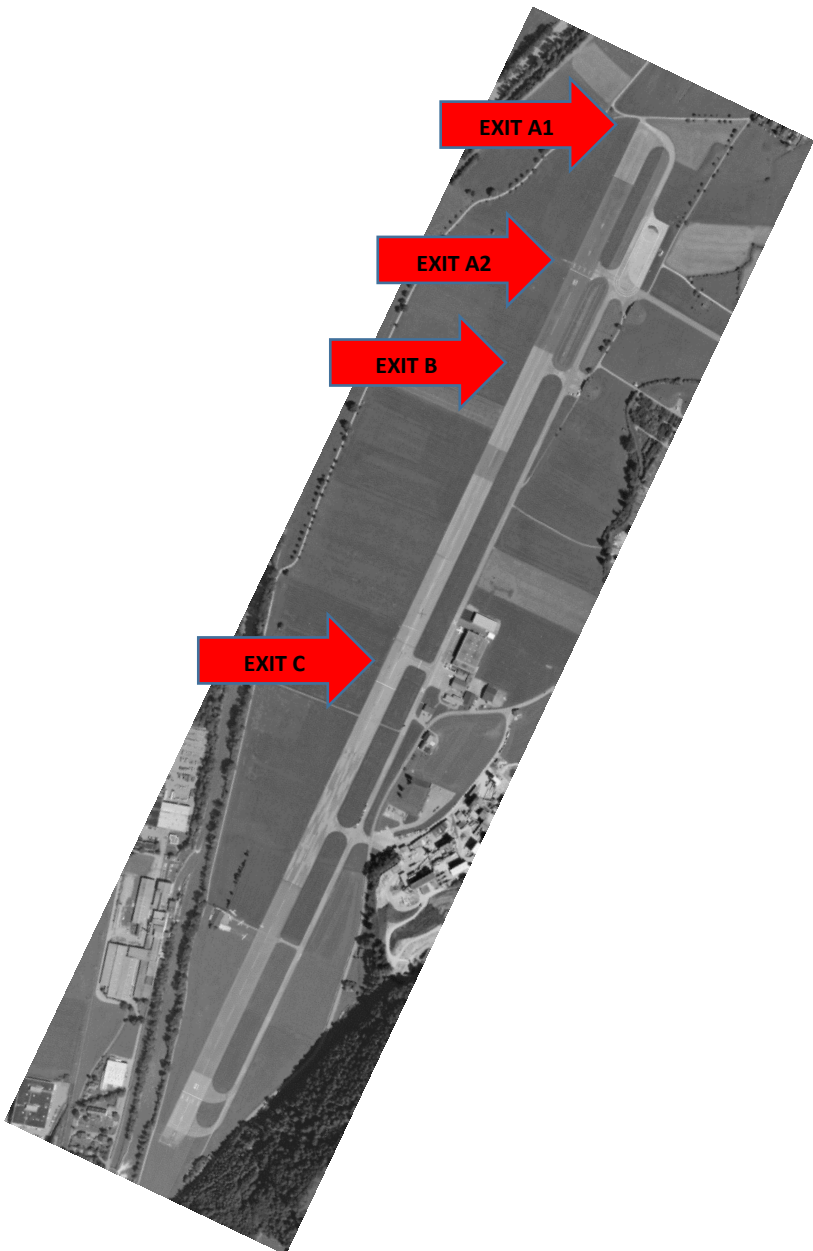
AD Info	134.830
GND	130.055
DISPLAY	130.705

 Airshow
ARP/DEP/Circuit
Sensitive Areas

AIRBASE OPS



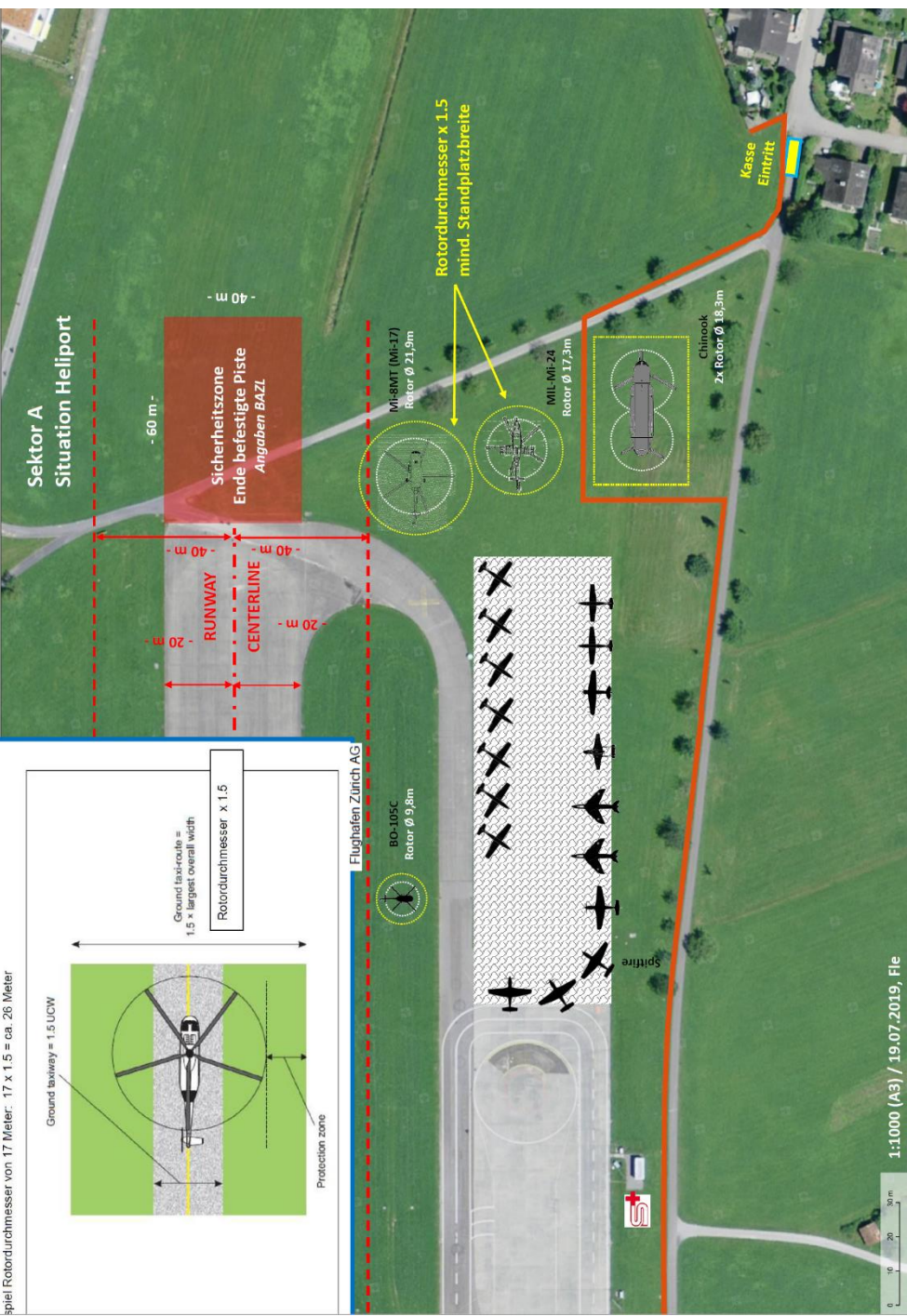
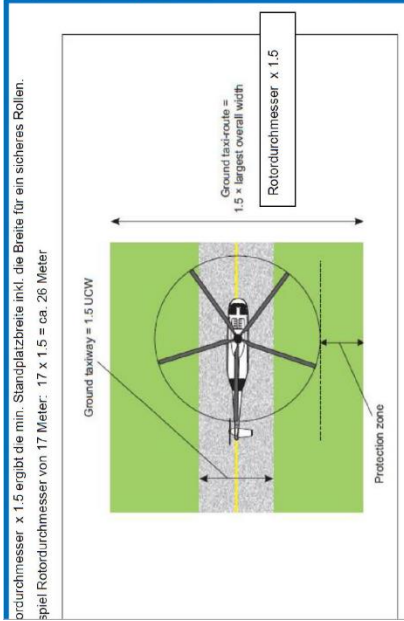
AIRBASE OPS



Mollis LSMF / Airport 47°04.8N 009°04.0E					
ELEV 1470 ft / 447 m					
FREQ 134.830					
RWY	TORA	ASDA	TODA	LDA	WIDTH
01 012°	1800 m	1800 m	1800 m	1800 m	40 m
19 192°	1800 m	1800 m	1800 m	1800 m	



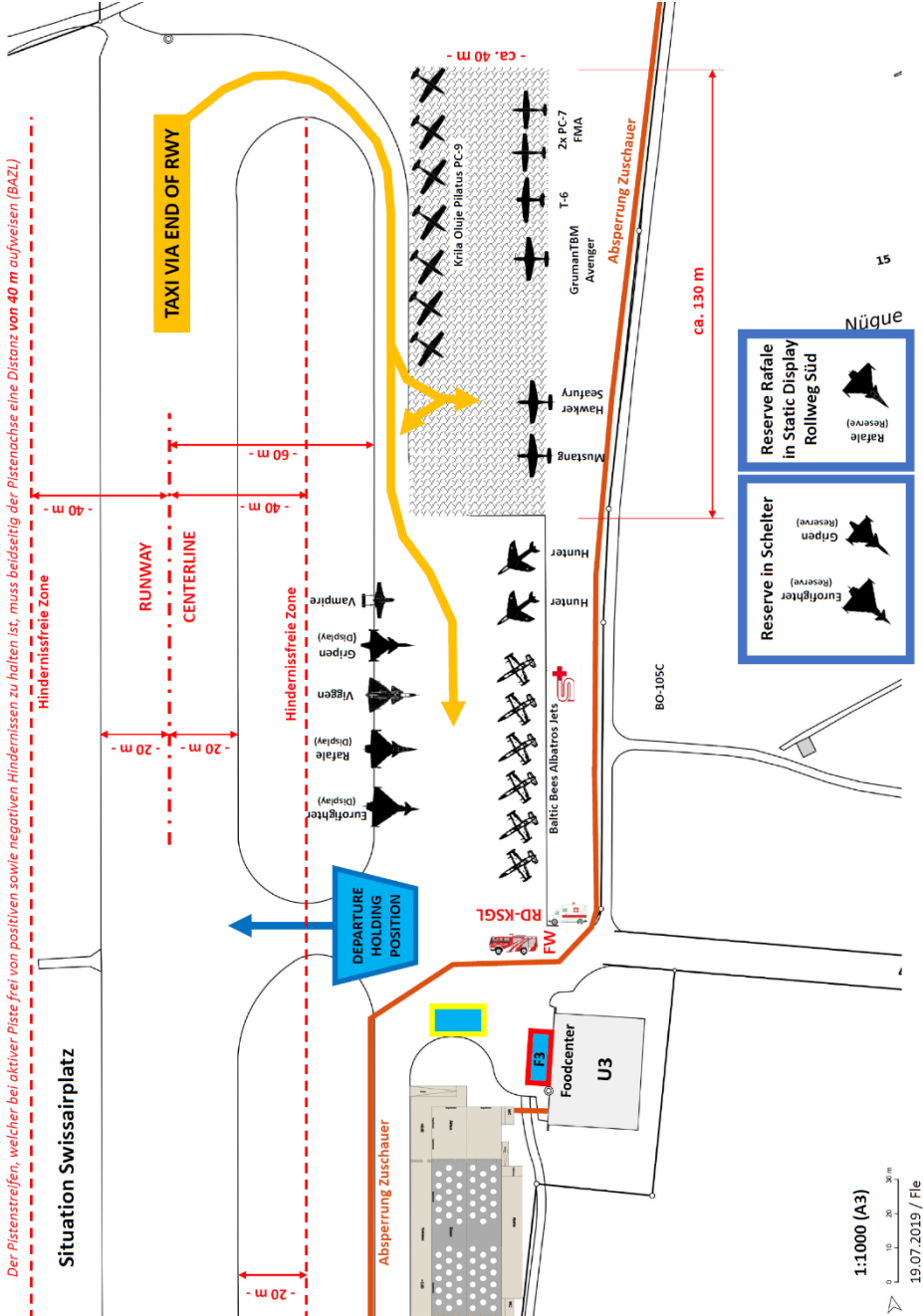
Rotordurchmesser x 1.5 ergibt die min. Standplatzbreite inkl. die Breite für ein sicheres Rollen.
 Beispiel Rotordurchmesser von 17 Meter: 17 x 1.5 = ca. 26 Meter



AIRBASE OPS



AIRBASE OPS



Sektor Hangar U2 / U3

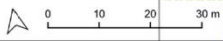
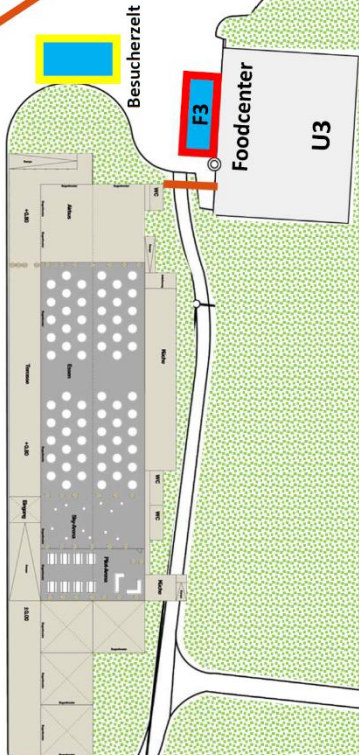
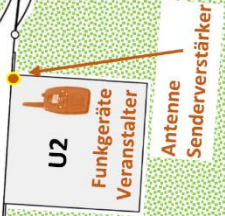
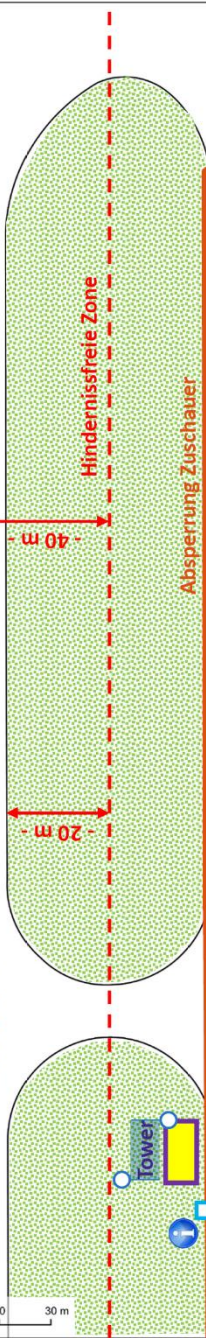
1:1000 (A4)

RUNWAY

CENTERLINE

← Start- / Landebahn →

Sektor B

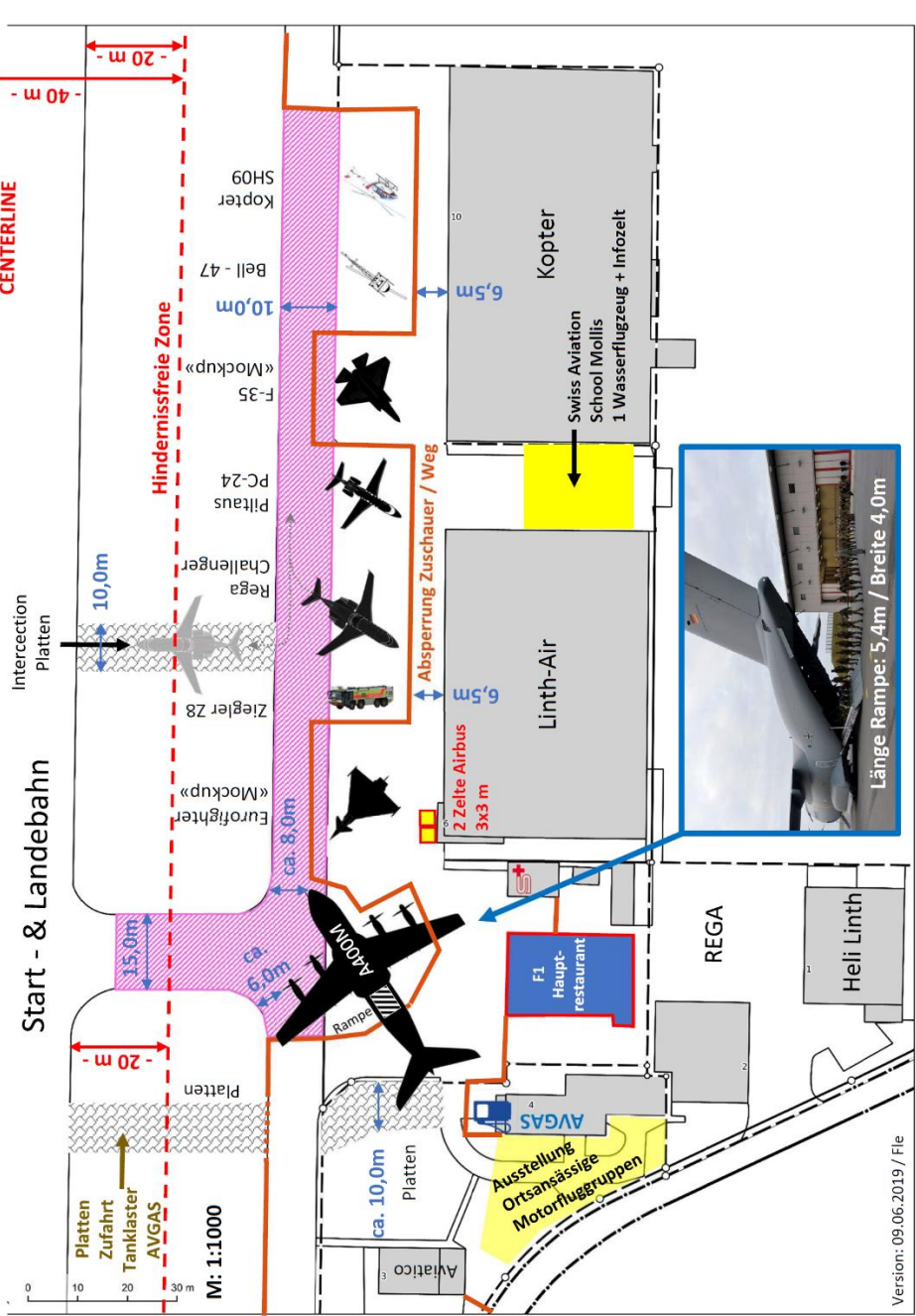


09.06.2019 / Fle

AIRBASE OPS

AIRBASE OPS

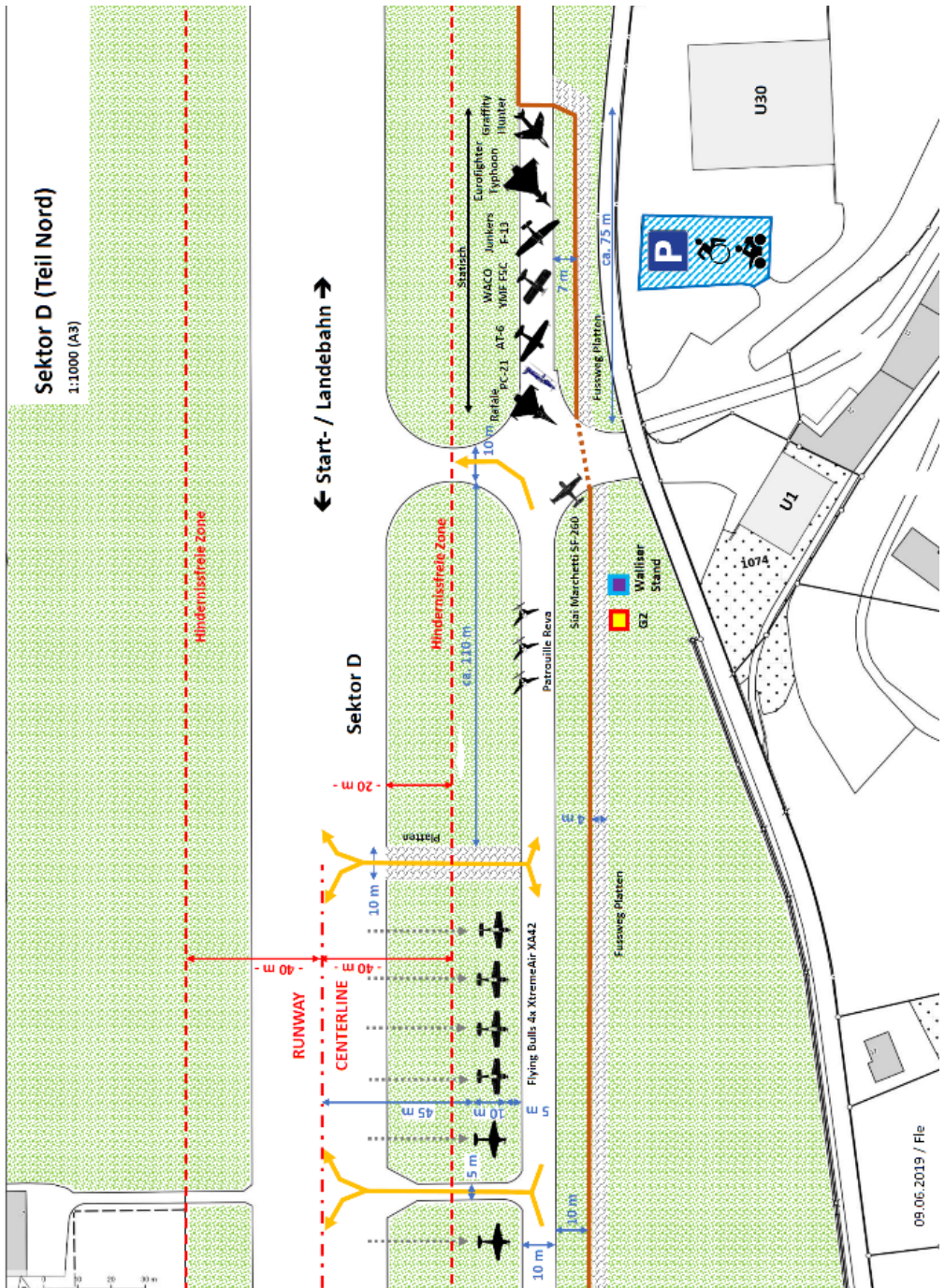
Static-Display Sektor C



Version: 09.06.2019 / File

Sektor D (Teil Nord)

1:1000 (A3)

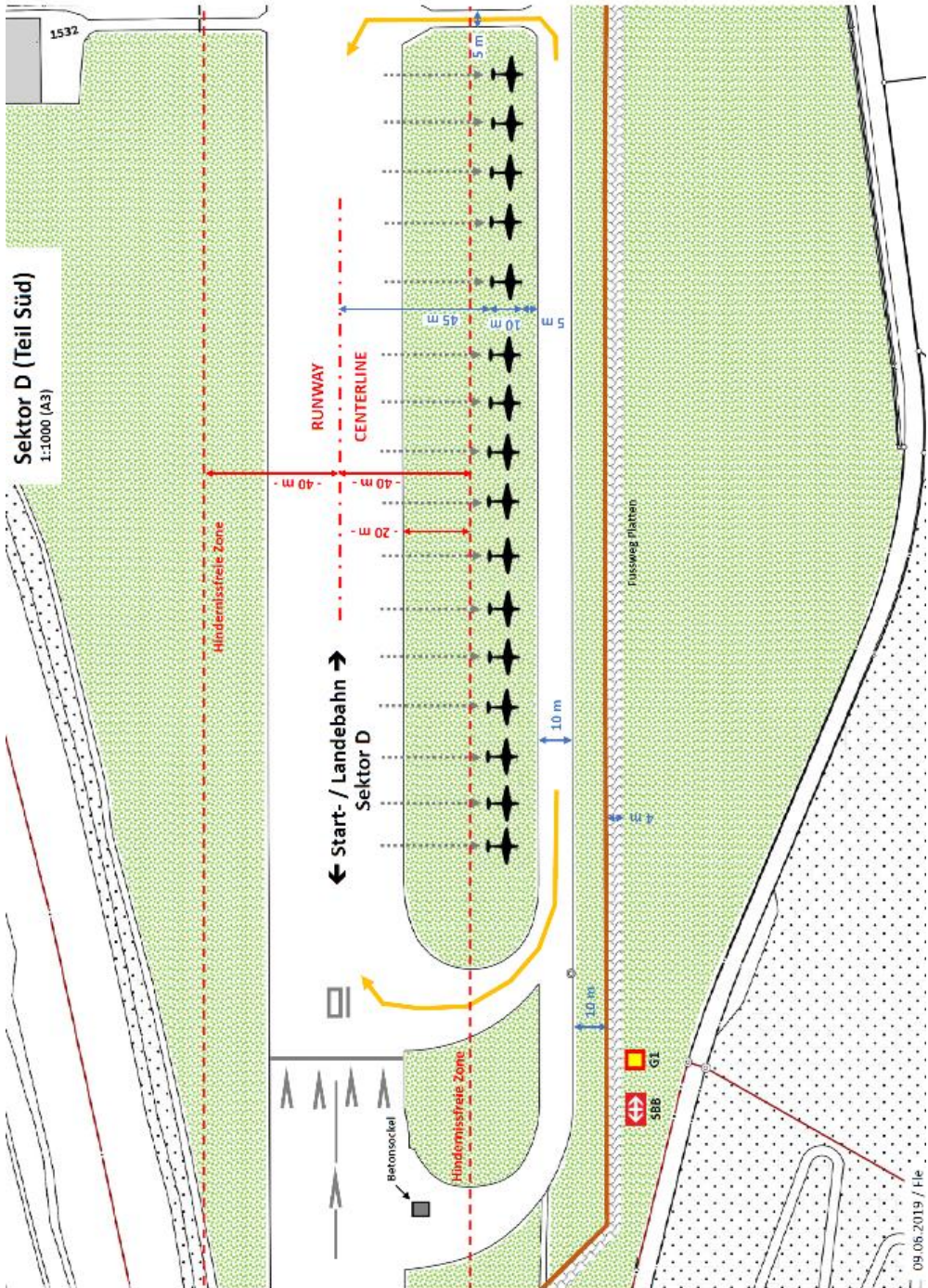


AIRBASE OPS

09.06.2019 / File

Sektor D (Teil Süd)

1:1.000 (A3)



14 APPCH CHARTS EMMEN (LSME)

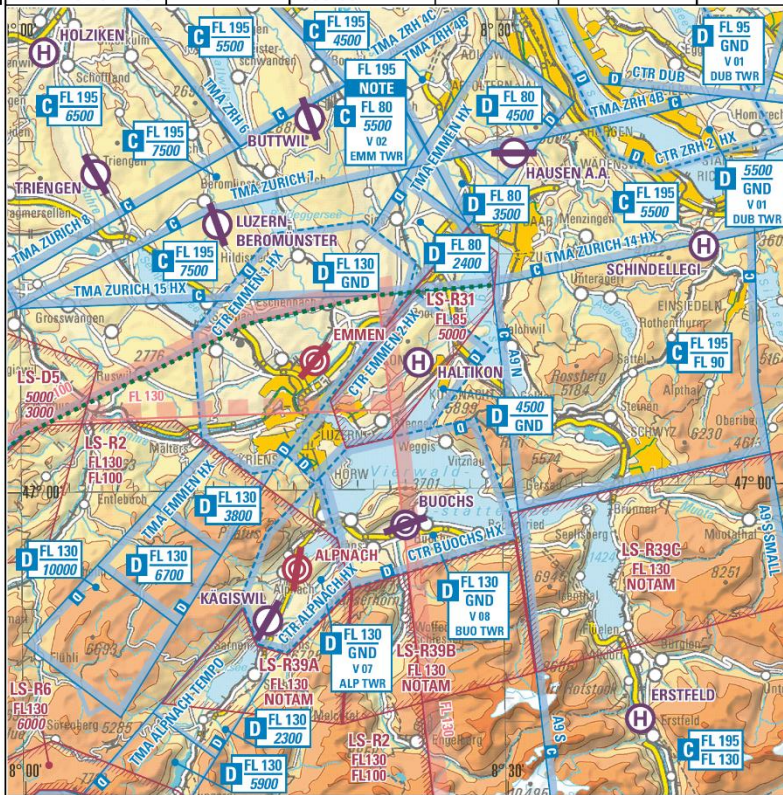
VFR AREA CHART

EMMEN

ELEV 427 m / 1401 ft

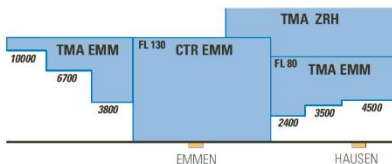
LSME

INFO	ARR	APP	TWR	DEP	VAR
V/U 10	V 12	V/U 16 U 40 V/U 17 V/U 30	V/U 02 120.425	U 12 133.480	2° 30' E (2018.5)
HX: Info 134.130					



NOTE Below FL125
ZURICH INFO 124.7

Scale 1:500 000



COR: LS-R39 added, V32 withdrawn (WEF 29MAR2018)

AIRBASE OPS

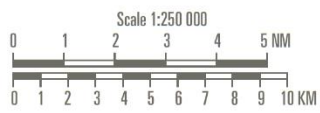
ELEV 427 m / 1401 ft

LSME

INFO	ARR	APP	TWR	DEP	VAR
V/U 10	V 12	V/U 16 U 40	V/U 02	U 12	2° 30' E
HX: Info 134.130		V/U 17 V/U 30	120.425	133.480	(2018.5)



 Noise sensitive area
 Below FL125 ZURICH TERMINAL 127.750
 Permission by ATC
 For Obstacles see Obstacle Chart 1:100 000.



COR: Noise sensitive area, LS-R39 added (WEF 29MAR2018)

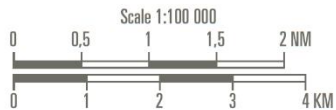
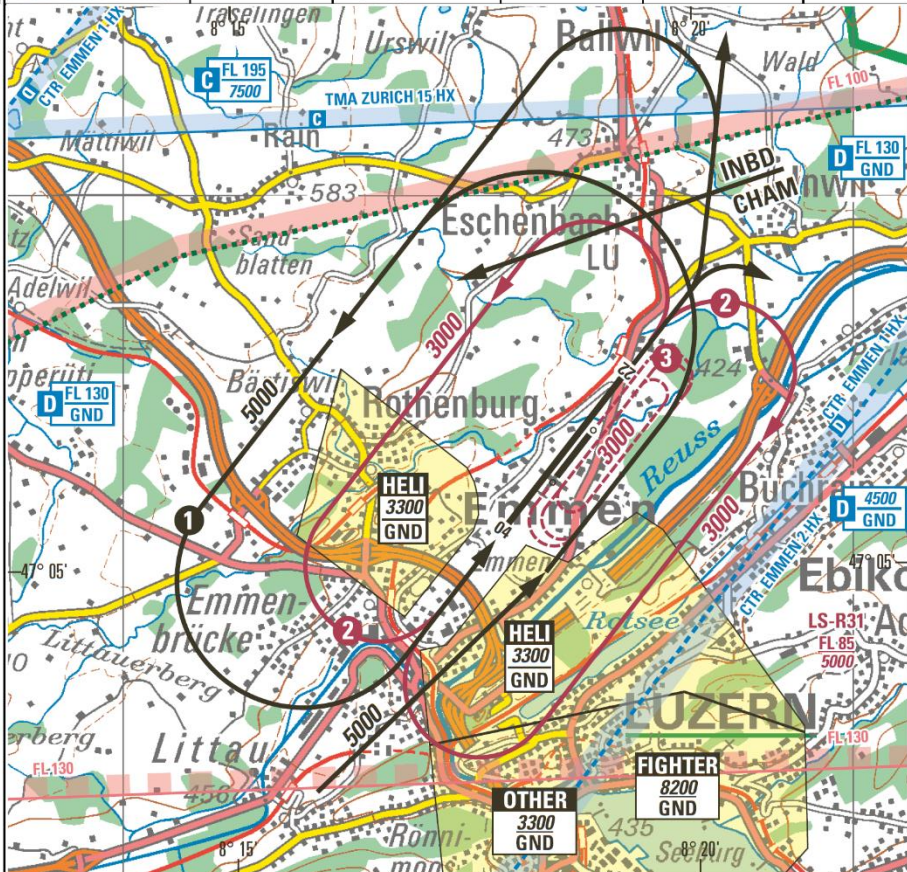
AIRBASE OPS



ELEV 427 m / 1401 ft

LSME

INFO	ARR	APP	TWR	DEP	VAR
V/U 10	V 12	V/U 16 U 40	V/U 02	U 12	2° 30' E
HX: Info 134.130		V/U 17 V/U 30	120.425	133.480	(2018.5)



For Obstacles see Obstacle Chart 1:100 000.

COR: Noise sensitive area (WEF 29MAR2018)

AIRBASE OPS

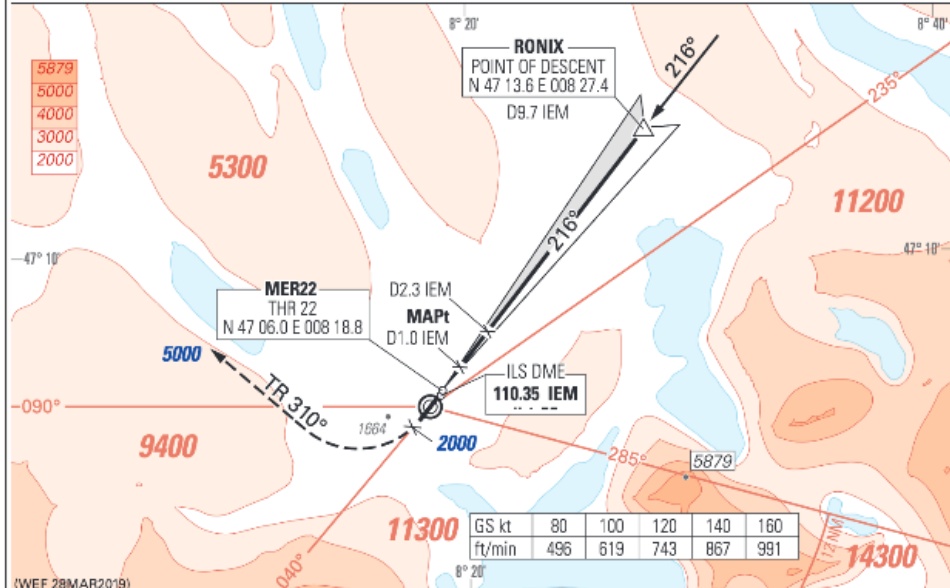
NATIONAL INSTRUMENT APCH CHART

ELEV 427 m / 1401 ft

MIL ILS or LOC RWY 22 EMMEN (LSME)

INFO	ARR	APP	TWR	DEP	VAR
V/U 10 HX: Info 134.130	V 12	V/U 16 U 40 V/U 17 V/U 30	V/U 02 120.425	U 12 133.480	2° 30' E (2018.5)

TRANS LVL: BY ATC
TRANS ALT: 7000

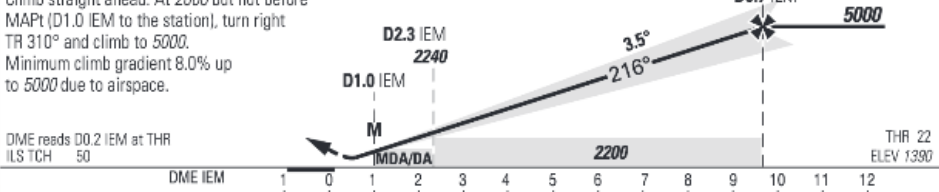


LOC	DME IEM	2.0	3.0	4.0	6.0	8.0	9.7
(GS out)	ALTITUDE	2130	2500	2870	3620	4360	5000

MISSED APPROACH

Climb straight ahead. At 2000 but not before MAPt (D1.0 IEM to the station), turn right TR 310° and climb to 5000. Minimum climb gradient 8.0% up to 5000 due to airspace.

DME reads D0.2 IEM at THR
ILS TCH 50



MIL ILS		MIL LOC (GS out)		CIRCLING NW of AD	
Missed apch climb grad MNM 5.6% up to 3000		Missed apch climb grad MNM 3.8% up to 3300		1. MAX 160kt 2. MAX 185kt	
DA(H)	A: 1679 (288) B: 1688 (298)	C: 1698 (308) D: 1708 (318)	MDA(H) 1890 (500)		
	FULL	ALS OUT	FULL	ALS OUT	MDA(H) VIS
A	RVR 650m	RVR 1400m	RVR 1500m	RVR 1500m	2260 (860) 1500m
B	RVR 700m			CMV 2300m	2350 (950) 1600m
C				3170 (1170) ¹⁾ 2400m	
D				3560 (2160) ²⁾ 3600m	

COM FAILURE PROC
SRE: Shortest turn to HDG 230° and climb to VMC on top, call on STBY COM, squawk 7600.
MIL ILS: As soon as cleared for MIL ILS continue APCH and land, squawk 7600.

MIL ILS or LOC RWY 22

COR: LOC combined

EMMEN (LSME)

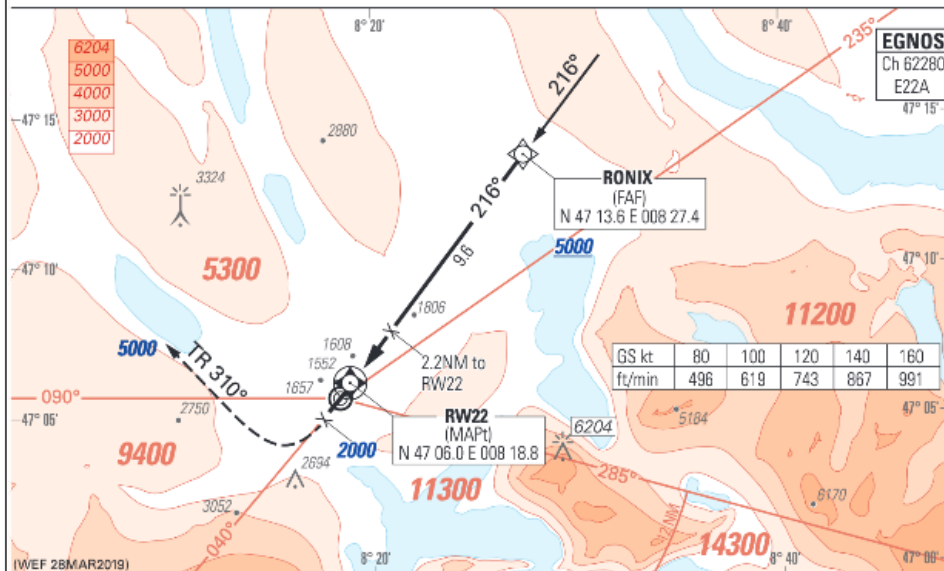
EMM 28



AIRBASE OPS

INFO	ARR	APP	TWR	DEP	VAR
V/U 10 HX: Info 134.130	V 12	V/U 16 U 40 V/U 17 V/U 30	V/U 02 120.425	U 12 133.480	2° 30' E (2018.5)

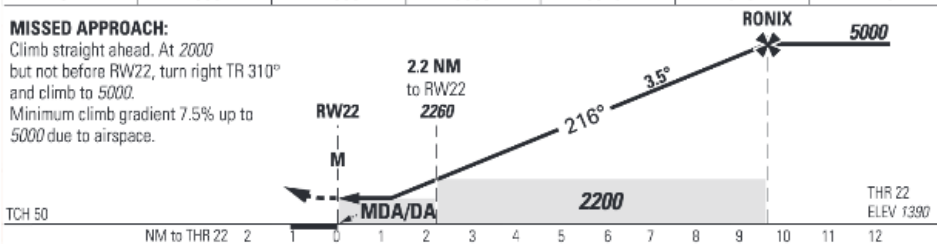
TRANS LVL: BY ATC 1. RMK: 0.4 NM BFR THR 22 visual segment surface (VSS) penetrated by trees up to 1480ft AMSL.
TRANS ALT: 7000



DIST to RW22	3.0	4.0	5.0	6.0	7.0	8.0
ALTITUDE	2550	2930	3300	3670	4040	4410

MISSED APPROACH:

Climb straight ahead. At 2000 but not before RW22, turn right TR 310° and climb to 5000. Minimum climb gradient 7.5% up to 5000 due to airspace.



LPV (CAT I)				LNAV				CIRCLING NW of AD	
Missed apch climb grad MNM 5.0% up to 3000		Missed apch climb grad MNM 2.5%		Missed apch climb grad MNM 4.3% up to 3000		Missed apch climb grad MNM 2.5%		1) MAX 160kt	
A: 1747 (357) DA(H) B: 1759 (369) C: 1773 (383)		A: 2360 (970) DA(H) B: 2373 (983) C: 2387 (997)		MDA(H) 2100 (710)		MDA(H) 2470 (1080)			
FULL	ALS OUT	FULL	ALS OUT	FULL	ALS OUT	FULL	ALS OUT	MDA(H)	VIS
A RVR 900m	RVR 1500m	RVR 1500m		RVR 1500m		RVR 1500m		2260 (860)	1500m
B RVR 1000m								2350 (950)	1600m
C RVR 1100m	RVR 1800m	CMV 2400m		CMV 2400m		CMV 2400m		3170 (1770)1	2400m
COM FAILURE PROC		SRE: Shortest turn to HDG 230° and climb to VMC on top, call on STBY COM, squawk 7800. MIL RNAV: As soon as cleared for MIL RNAV continue APCH and land, squawk 7600.							

AIRBASE OPS



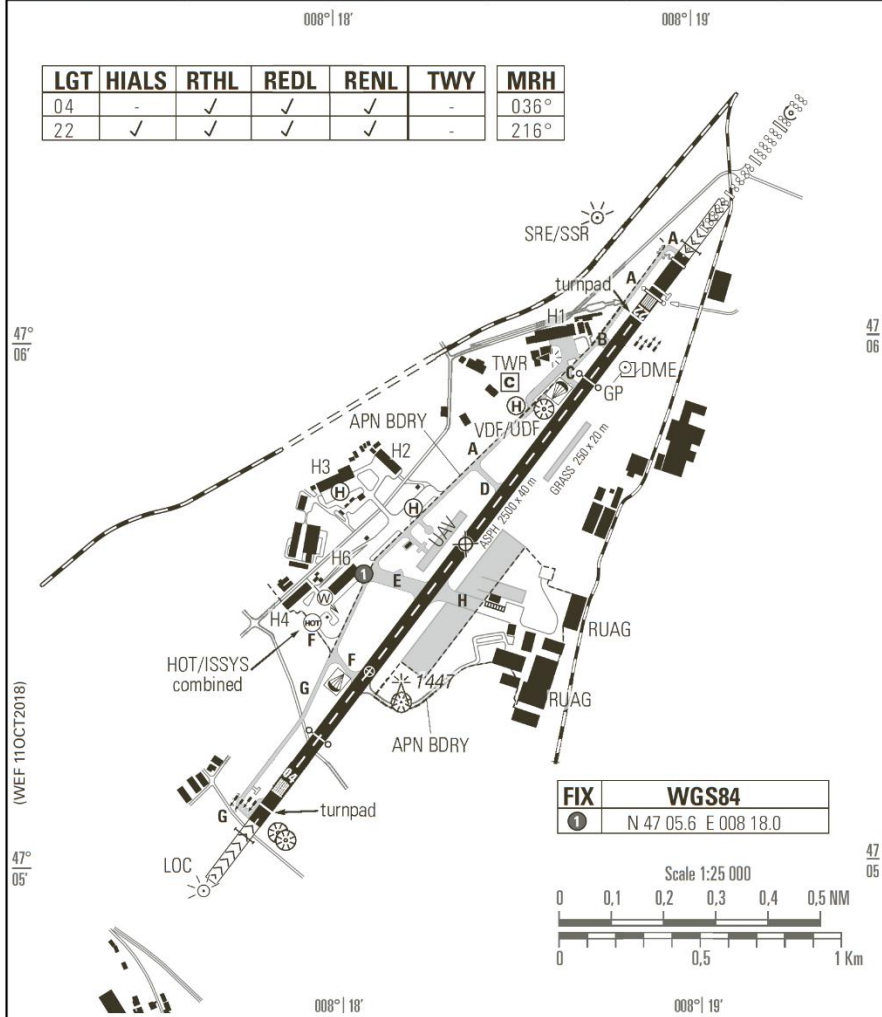
ELEV 427 m / 1401 ft

LSME

N 47 05.5 E 008° 18.3

INFO	ARR	APP	TWR	DEP	VAR
V/U 10 HX: Info 134.130	V 12	V/U 16 U 40 V/U 17 V/U 30	V/U 02 120.425	U 12 133.480	2° 30' E (2018.5)

LGT	HIALS	RTHL	REDL	RENL	TWY	MRH
04	-	✓	✓	✓	-	036°
22	✓	✓	✓	✓	-	216°



RWY	PCN	TORA	ASDA	TODA	LDA	ASI	TDZE	THR
04	45/F	8208 ft 2500 m	8208 ft 2500 m	8208 ft 2500 m	8005 ft 2440 m	P 4.5°	1400	N 47 05.1 E 008 17.8
22	45/F	8208 ft 2500 m	8208 ft 2500 m	8208 ft 2500 m	7800 ft 2377 m	P 3.5°	1390	N 47 06.0 E 008 18.8

AIRBASE OPS



ILS 14

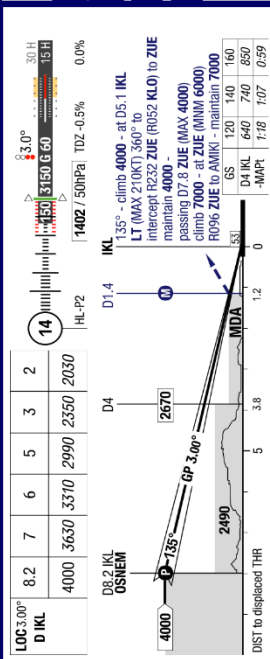
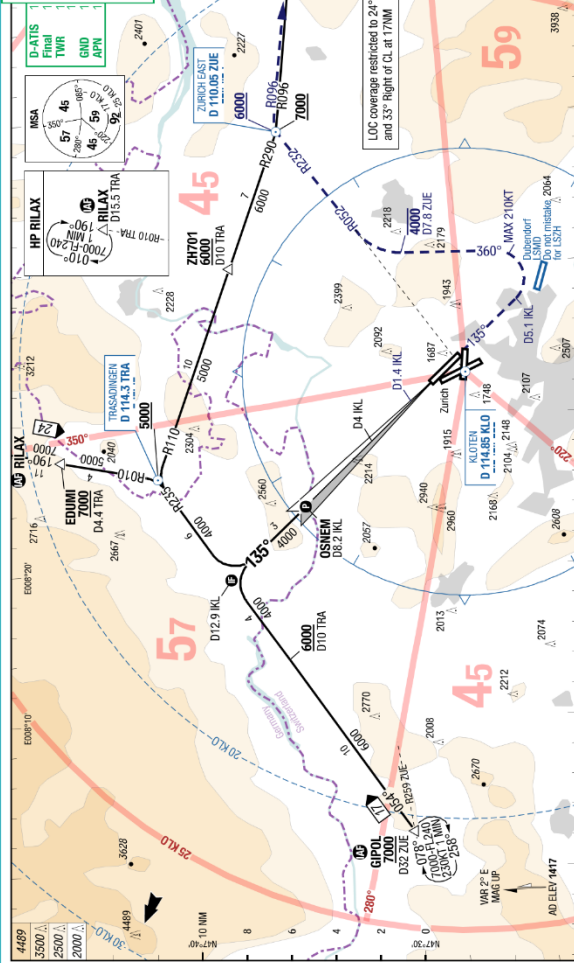
LSZH - ZRH

- 4489
- 3500
- 2500
- 2000

D-ATIS
Final
TWR
GND
APN

125.730
125.330
118.100
119.700
121.905
121.855 North RWY 28

ILS 14
D 111.75 IKL



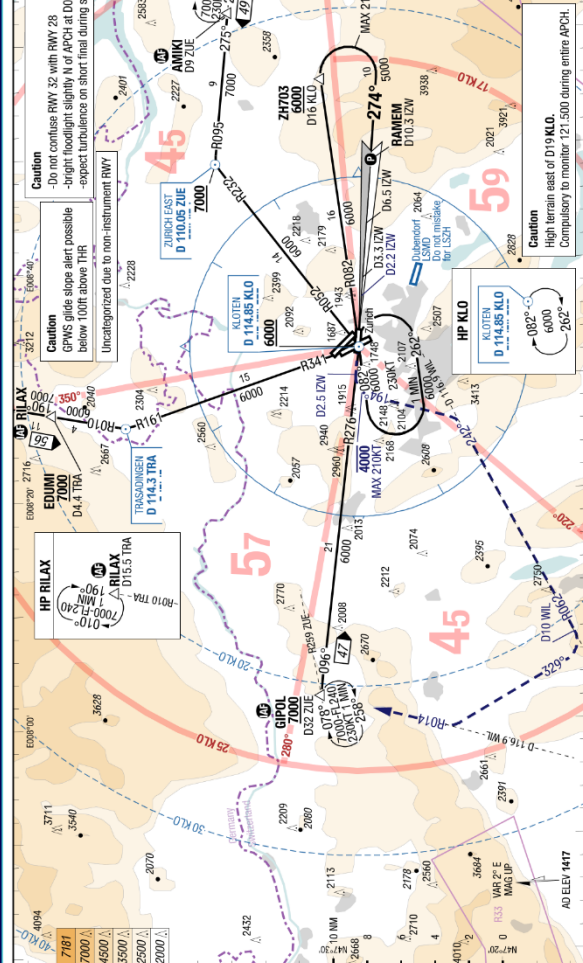
Circling	LOC DME	Cat 1 DME	Cat 2 DME	Cat 3b DME	14	
					ft - m/Km	ft
Not authorized	550 - 1.8	200 - 350	100 - 300R	0 - 75R	Company	
Not authorized	1950	1610 / 187 RA	95 RA	0 - 75R	Company	
Not authorized	550 - 1.8	200 - 350	100 - 300R	0 - 75R	Company	
Not authorized	1950	1610 / 187 RA	95 RA	0 - 75R	Company	

1) With EVS 350m, no EVS use STD
2) If not conducting auband RWY 350m required

AIRBASE OPS



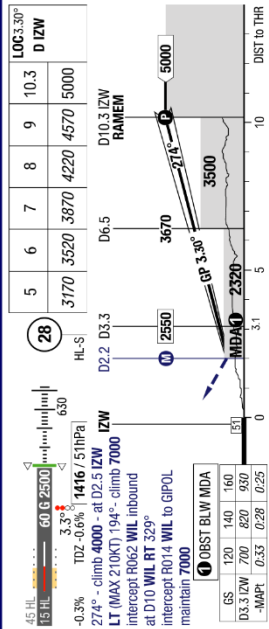
7181
7000
4500
3500
2500
2000



D-ATIS
Final 125.730
TWR 125.330
118.100
119.700
121.905
121.855 North Rwy 28
121.755 South Rwy 28

GND
APN
North Rwy 28
South Rwy 28

ILS 28
D 109.75 IZW



28	Cat 1 DME	Cat 1 DME	Cat 1 DME	Cat 1 DME	LOC DME	Circling
	ft - min	ft	ft	ft	ft	ft
C	670 - 2.4	1440 - 2.4	680 - 2.4	1450 - 2.4	880 - 2.4	Not published
D	680 - 2.4	1450 - 2.4	690 - 2.4	1460 - 2.4	890 - 2.4	Not published
	ft - min	ft	ft	ft	ft	ft
	2100	2870	2100	2870	2290	2290

1) With FIS 1.6 km
2) Up to 5200ft
3) Terrain to determine MPT/MA
4) Up to 4900ft

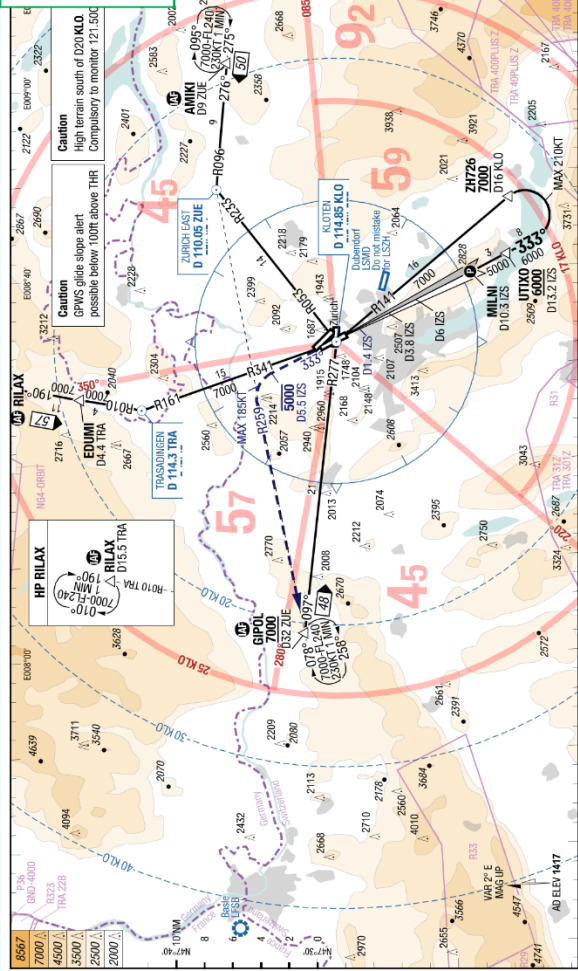
AIRBASE OPS

AIRBASE OPS

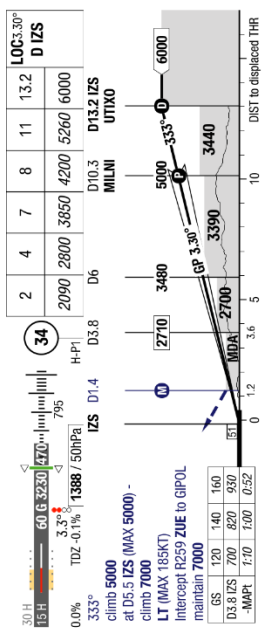
☀️ 🔄 🔍 5/5 🔍 ▶️

D-ATIS
 Final 125.330
 TWR 118.100 120.230
 119.700
 GND 121.905
 APN 121.855 North RWY 28
 121.755 South RWY 28

ILS 34
 D 110.75 IZS



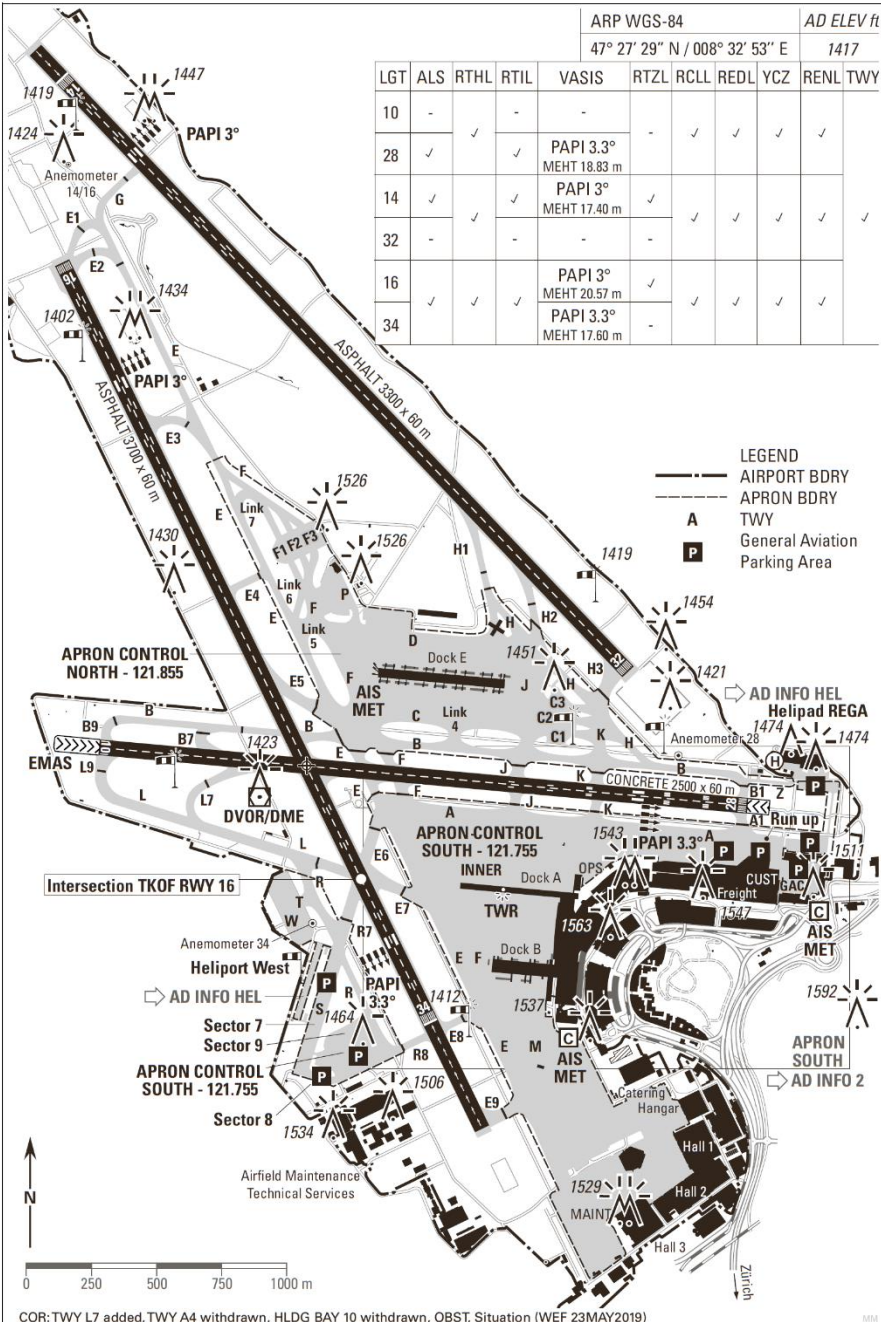
8567
 7000
 4500
 3500
 2500
 2000



34		Cat 1 DME	Cat 1 DME	Cat 1 DME	LOC DME	Circling
C	ft - m/km	200 - 550 1590	230 - 550 1620	240 - 550 1630	600 - 2.4 2070	Not published
D	ft - m/km	240 - 550 1590	240 - 550 1590	240 - 550 1630	600 - 2.4 2070	Not published

1) Up to 2400ft
 2) Timing to determine MAPt/HA



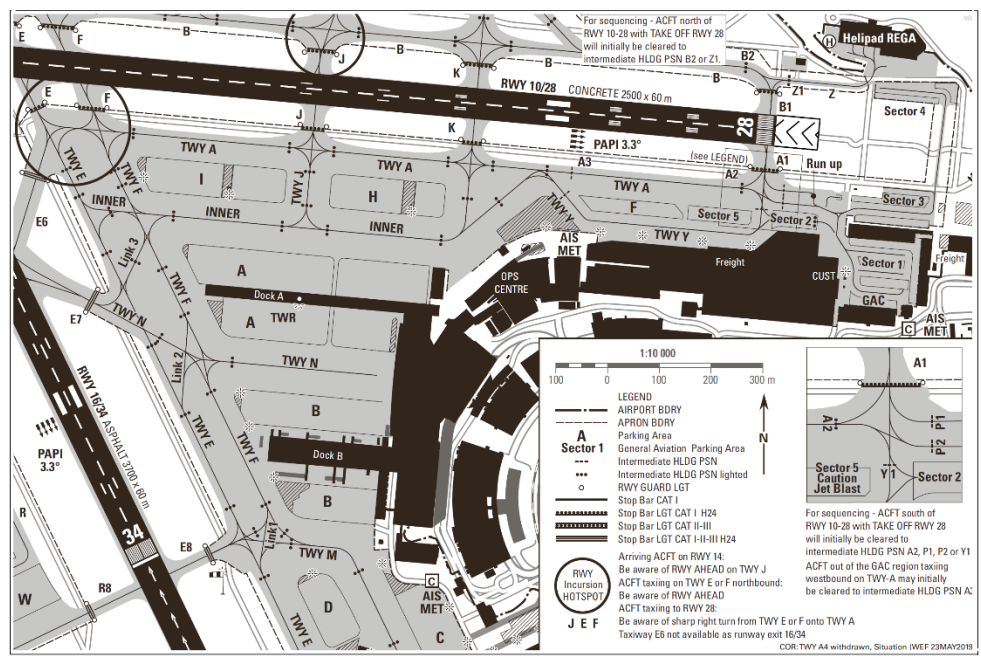


AIRBASE OPS



AIRBASE OPS

06/19 MAY 23
 SKYGUIDE: CH-8602 WANGEN BEI DUEBENDORF
 LSZH 2



COR: TWY A4 withdrawn, Situation (WEF 23MAY2018)



16 TECHNICAL SUPPORT

Piston engine fuel	AVGAS 100LL
Prop fuelling only	Truck in all Sectors
Jet fuel	Jet A1 in a Truck in all Sectors
Parafin oil	Available on request
Hydraulic fluids	No
Engine oils	No
Oxygen	No
Compressed air	2000 psi, standard connection
Electricity	Request with Marco Zollinger: Mail: marco.zollinger@zigermeet.ch Mobile: +41 79 446 69 80
Tow truck	Max. ACFT weight 20 t
Tow bars	To be furnished by display teams
Fuelling system	Open class / Nato system

No refuel available for guest airplanes

17 EMERGENCIES

The emergency procedures published in this section are valid for the whole period of Zigermeet19, for arrival, departure and display flights.

HIGHEST PRIORITY = SAFETY FIRST!

17.1 General instructions

Emergency 'MAYDAY, MAYDAY, MAYDAY'

- An emergency condition in which the safety of the aircraft or of persons on board or on the ground is endangered for any reason. A full emergency is imminent danger and requires immediate assistance. When necessary, the pilot must initiate the communications using the urgency call "MAYDAY" (spoken three times).

Urgency 'PAN PAN, PAN PAN, PAN PAN'

- An emergency condition concerning the safety of an aircraft which does not require immediate assistance. When necessary, the pilot must initiate the communications using the urgency call "PAN PAN" (spoken three times).

Taxi on tarmac, taxiways and runway:

- When starting taxiing the pilot must check the proper function of the brakes
- During taxi no ground loops, high-speed taxi or other manoeuvres are allowed

On the tarmac:

- The pilot checks that all electrical consumers of the aircraft are switched off
- Pilots or marshalls sporadically perform outside checks of the aircraft giving special attention to fuel leaks
- The fueler is responsible for the proper grounding of the aircraft
- During refuelling special attention must be given to smoking visitors

17.2 Prepared Emergency

For prepared emergencies during the airshow requiring a longer runway Emmen and Zurich (LSZH) are within reasonable distance.

17.3 For unprepared incidents, following services are available:

Fire brigade:

During display, an enforced fire brigade service is provided. For specific instruction (i.e. canopy operation, securing of ejection seats etc.) contact fire brigade officer on arrival.

17.4 Ambulance / first aid:

Rescue teams with medical and first aid facilities are on site. Rescue helicopters of the Swiss Air Ambulance REGA are on standby in the static display area.

Emergency hospitals are located in the city of Glarus and Uznach.

Help – Point:

Marco Zollinger: +41 79 446 69 80

18 DIRECTORY DISPLAY ORDER

19	INTRODUCTION	40
19.1	Flight safety	40
19.2	Mandatory briefings	40
20	DISPLAY REGULATIONS	41
20.1	General regulations	41
20.2	Display line and centre	41
20.3	Minimal distances to spectators.....	42
20.4	Airplane categories.....	42
20.5	Minimum altitudes	42
20.6	Inflight holdings	42
21	VIOLATION OF LIMITATIONS	43
21.1	YELLOW CARD	43
21.2	RED CARD	43
22	DISPLAY PHRASEOLOGY	43
23	DISPLAY LINES	44
24	NOISE PROTECTION AREAS	46
25	HOLDING AREAS	47
26	DISPLAY FLOW	47
26.1	Display aircraft operating from MOLLIS.....	47
26.2	Display aircraft operating from another airbase	47
26.3	Display schedule	48
27	MAERCHLER FLYING DAYS	48
28	FREQUENCY PLAN	49
28	SPEAKER	49
29	AIR-TO-AIR PHOTOGRAPHY	50

19 INTRODUCTION

Throughout the flying activities staged in conjunction with ZIGERMEET19, it is the FOCA's (Federal Office for Civil Aviation) order to permit skilful and convincing displays and role demonstrations. However, flight and public safety are always to be of paramount importance. The following rules are to be complied with during arrival/ departure and all display and associated flying during the period Thu 15 Aug – Mon 19 Aug 2019.

19.1 Flight Safety

In general, and especially during the airshow, the priority for the OC ZIGERMEET19 is to conduct flight operations in a safe and efficient manner. Hence, it aims to fulfil its obligations towards the FOCA, the public, the environment and personnel, and to establish trust.

The public will judge all display crews on their performance. We want you to convince the public that you are responsible and professional pilots, so act accordingly.

Major incidents, any violation of display regulations or unsafe flying will be reported to the FOCA.

19.2 Mandatory Briefings

The airshow display director will give a briefing on each day of the airshow. It's attendance is mandatory for each display pilot (team leader for display teams). The briefing will be held in the Copter building at:

Friday: 12:00 LT
In case of arrival after 12:00 LT contact display director

Saturday: 08:30 LT and 12:30 LT

Noncompliance will automatically ban the respective pilot from participation at the airshow.

NO BRIEFING, NO FLIGHT!



20 DISPLAY REGULATIONS

20.1 General Regulation

1. The limitations listed below do not affect any more stringent limitations imposed by national authorities, manufacturers, or any other operating authority.
2. The OC ZIGERMEET19 is empowered to impose increased limitations on individual aircraft or aircraft display teams.
3. Due to reduced separation between RWY Axis & spectators of 60 meters:
**Only single take-off and landing with 10 seconds interval allowed.
No planned Go-Arounds and no Go-Around / Touch and Go during Display allowed.**
4. A valid CPL (commercial pilot) or CFI (certified flight instructor) license is mandatory for all pilots displaying. For aerobatic performances, a valid display authorization is required.
5. The authorities require sufficient training on type flown.
6. Aircraft are not to be flown outside the aircraft's proven limitations.
7. Aircraft must not exceed whichever is the lower of a true Mach number of M0.90 or 500kts indicated airspeed.
8. No manoeuver is to be attempted, which is likely to jeopardise the safety of spectators in the event of mishap or misjudgement.
9. Engines are not to be shut down during flying demonstrations.
10. Overflying of the public area is strictly forbidden.
11. Sensitive areas (see map "noise protection areas") are to be overflown at least at 1'000ft/GND.
12. No low passes will be approved during arrivals & departures.

20.2 Display line and centre

The two display lines at the north west of the runway, one with 150 meter distance to the spectators and the second especially for jets at 230 meter distance to the spectators, will clearly be signed on ground with red and yellow bands. The display centre is marked as well.

20.3 Minimal distances to spectators

Prop Aircraft: Use line at 150 meter

Jet Aircraft: Use line at 230 meter

20.4 Airplane categories

Cat I < 1000 kg prop + turboprop

Cat II > 1000 - 4000 kg prop + turboprop

Cat III > 4000 kg prop + turboprop + all jets

20.5 Minimum altitudes

Jet + Prop Aircraft: 300 feet

Helicopter: Acc. own display limit

20.6 Inflight holdings

If necessary during the airshow, remote holding area NE "Weesen", NW "Bilten" or S "Schwanden" according visual approach chart may be assigned by MOLLIS INFO or requested by the participant in order to prepare for display.

Communication in the inflight holding area will be on MOLLIS INFO frequency and change to DISPLAY frequency upon instruction.

21 VIOLATION OF LIMITATIONS

21.1 YELLOW CARD

Aircrews violating rules stated above during display/rehearsal will receive a warning directly via R/T or at the debriefing.

21.2 RED CARD

Repeated or serious violation is going to result in the aircrew's suspension from any further Flying Display during ZIGERMEET19.

Upon the call "STOP-STOP-STOP" the display has to be stopped immediately.

22 DISPLAY PHRASEOLOGY

The Display Director will announce:

"Time check 2 Minutes" / "Time check 1 Minute"
Time remaining until end of your display time.

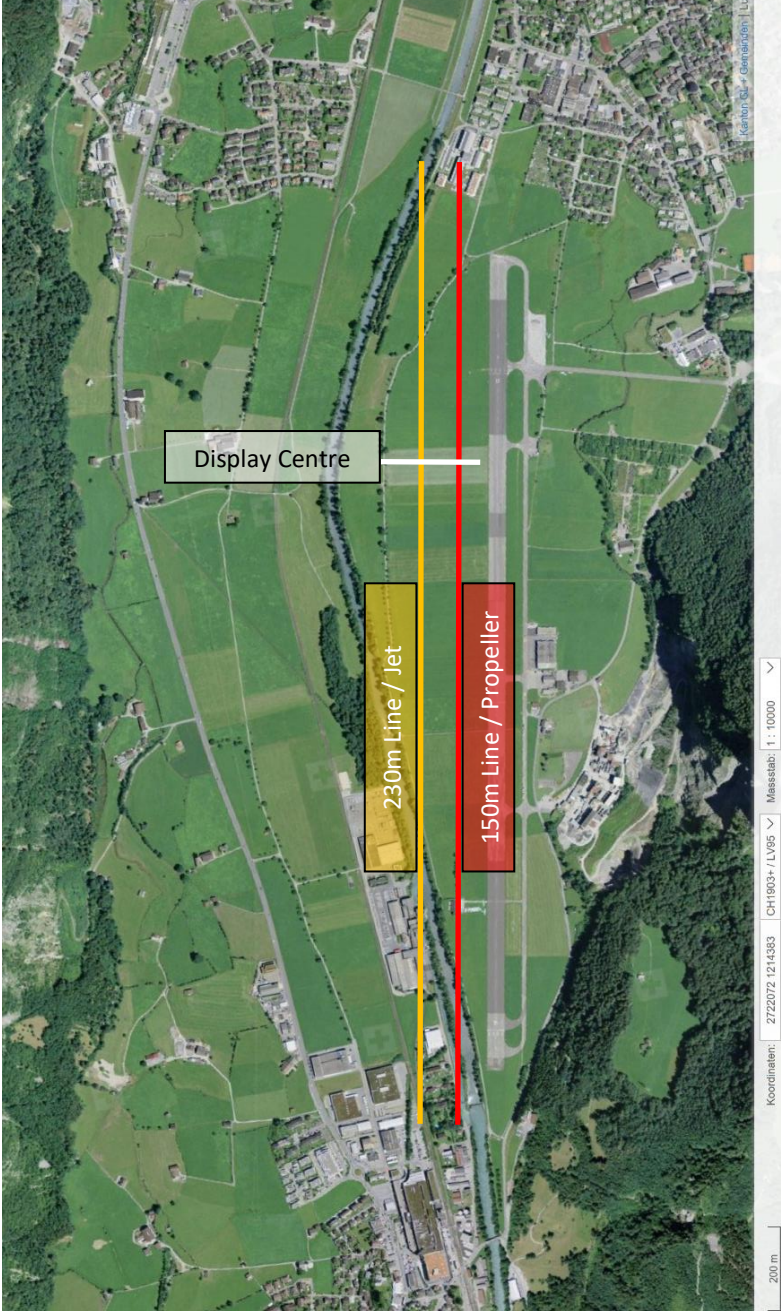
The Display Director will use the following commands to stop ongoing Displays:

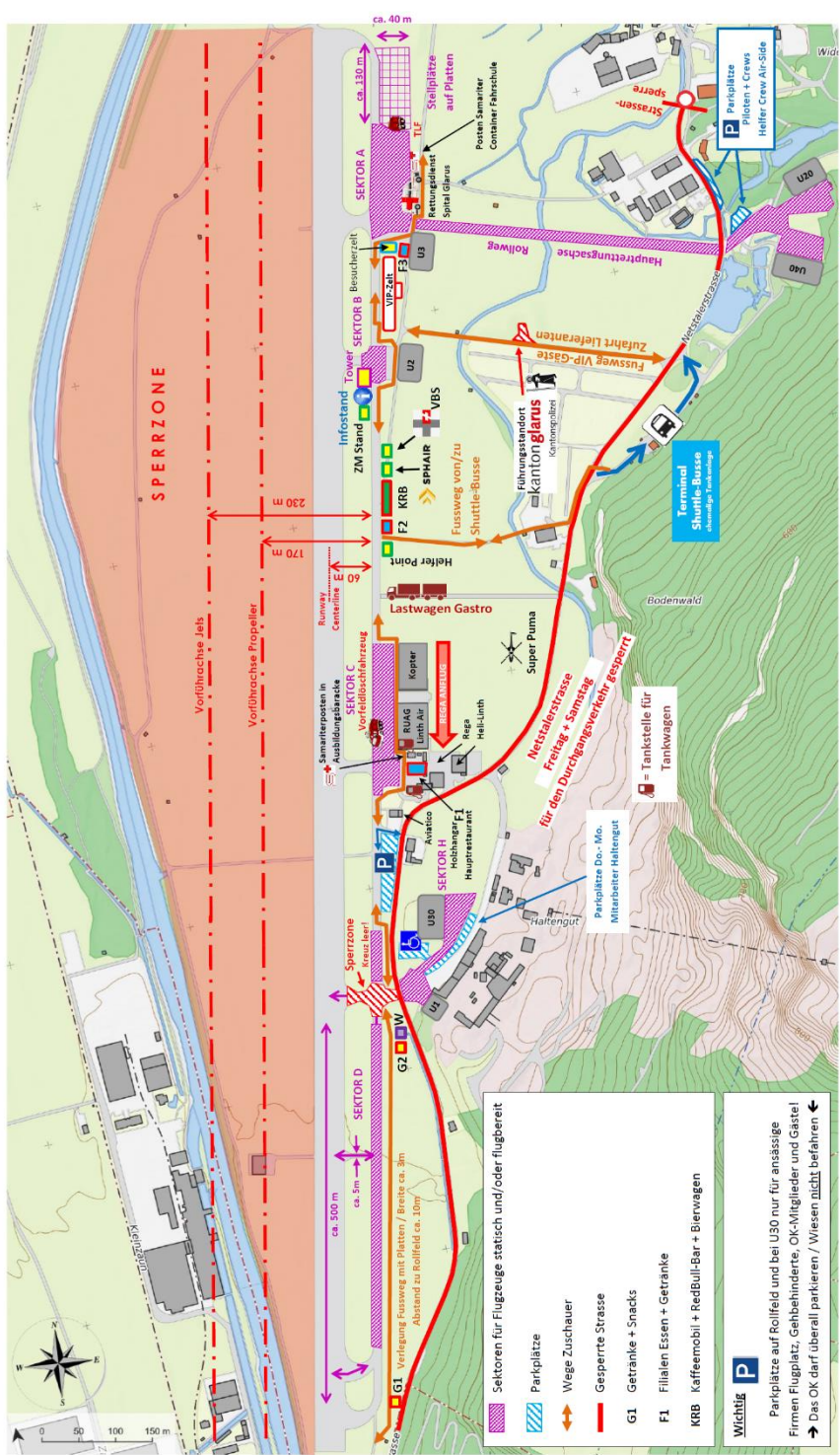
- **"Call sign xx TERMINATE"**
Discontinue your manoeuvre and follow the instructions.
Display may be continued when the cause for interruption is no longer applicable.
- **"Call sign xx STOP-STOP-STOP"**
Stop your display immediately. The respective aircraft/team will be ordered to land.

DISPLAY ORDER

23 DISPLAY LINES

DISPLAY ORDER

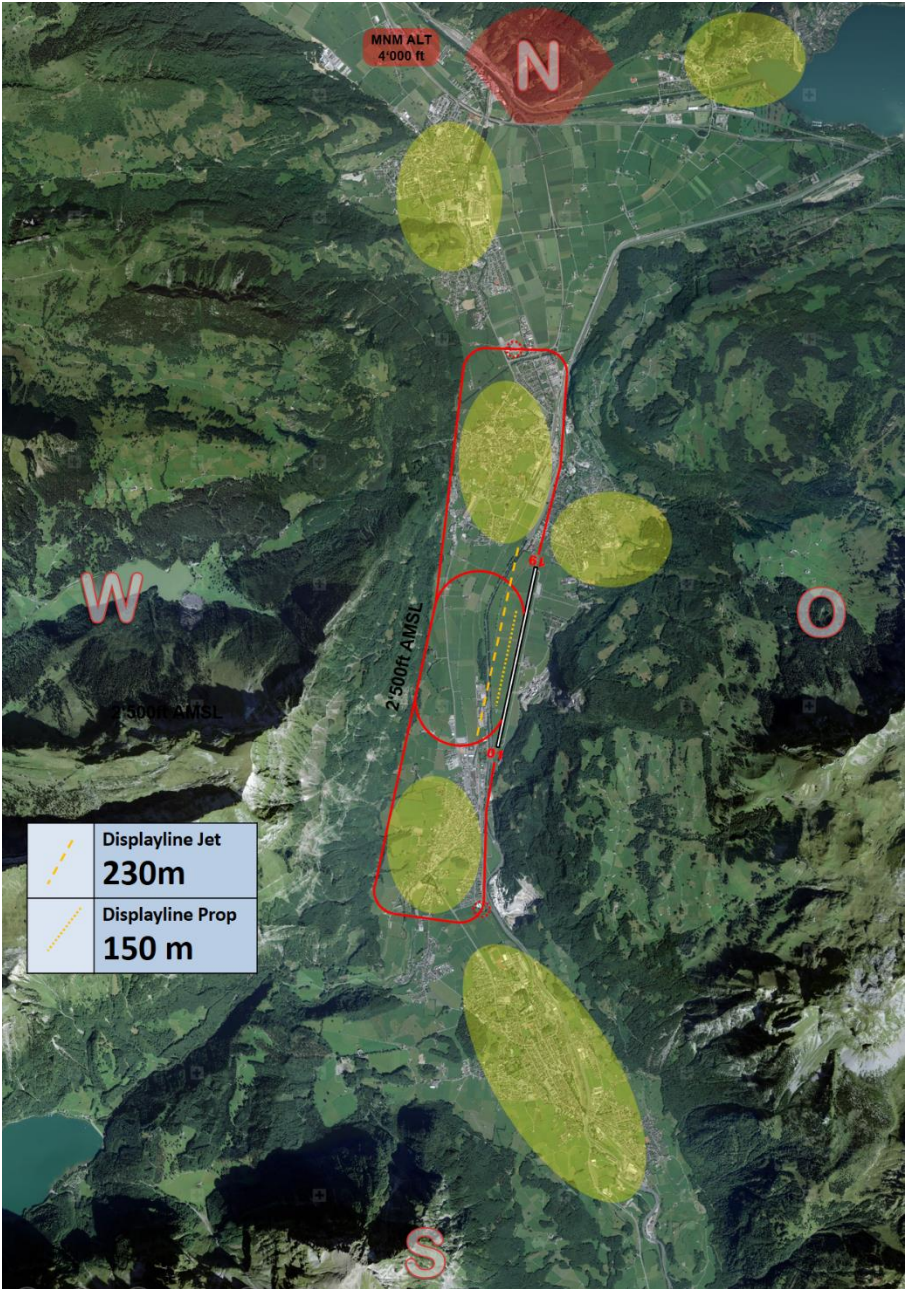




SEKTOR F
Steilplätze Tag + Nacht
Bewachung durch Security

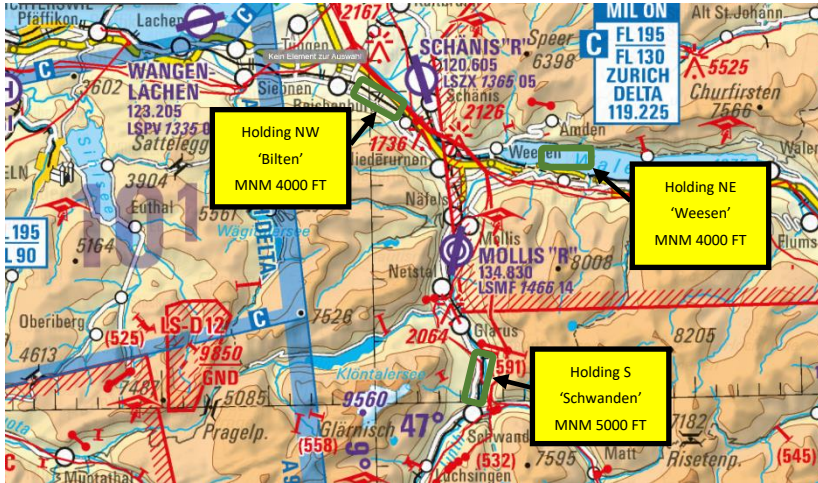
DISPLAY ORDER

24 NOISE PROTECTION AEREAS



DISPLAY ORDER

25 HOLDING AREAS



26 DISPLAY FLOW

26.1 Display Aircraft Operating from Mollis

1. No flight plan required for display with T/O AND LDG at Mollis Airport
2. Pilots are requested to call MOLLIS GND 130.055 at least 10' prior to start-up to receive confirmation of their display time
3. In case of changes to your assigned display slot and no radio contact, ground staff will inform you verbally
4. 10 minutes before planned display or take off time contact GND and report ready
5. Stick properly to schedule for taxi and display
6. Call DISPLAY 1' prior to end of display

26.1 Display Aircraft Operating from another Airbase

On MOLLIS INFO 134.830 report ready in any holding 5' before display time. You will receive an update on the schedule and be transferred to DISPLAY as soon as the airspace is clear.

DISPLAY ORDER

26.3 Display Schedule

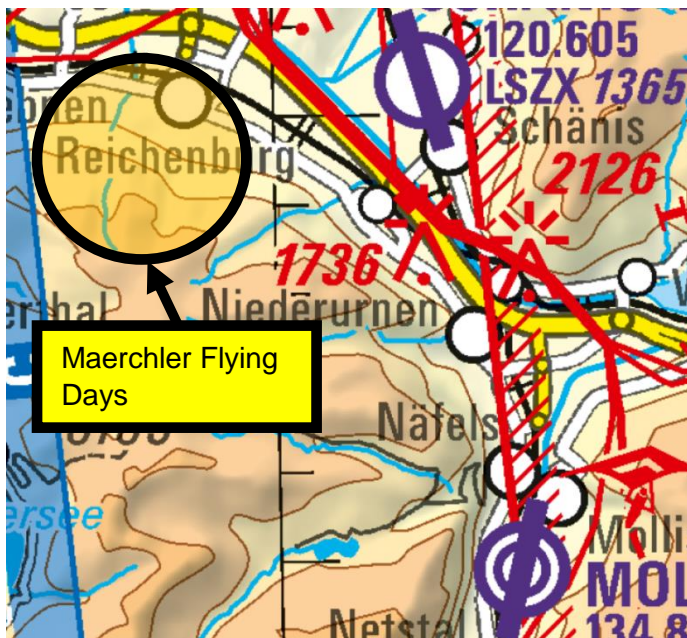
All times are in local times (LT = UTC + 2)!

To meet the tight flight schedule, timing will be strictly adhered to! Any delay in the program will be announced at first radio contact on MOLLIS GND and, if needed, will be compensated by shortening individual displays.

The schedule will continuously be updated and can be requested on the TOWER.

27 MAERCHLER FLYING DAYS

During Saturday 17th of August, the Maerchler Flying Days will take place including Parachutists and Delta Flyers. The activities will take place outside of the Mollis TEMPO RA. To improve the awareness of the Display Pilots the following chart shows the affected area:



27 FREQUENCY PLAN

MOLLIS GND	130.055	Schedule update, start-up clearance and taxi
MOLLIS DISPLAY	130.705	T/O directly into DISPLAY – LDG Only Show Pilots
MOLLIS INFO	134.830	Inbound and outbound or T/O into HOLDING

28 SPEAKER

Roland Studer will be available on the TOWER as our speaker for display on Friday 16th and Saturday 17th August. Available speaker languages are German, English and French.

Please send any useful information to:

roland.studer@vtg.admin.ch

29 AIR-TO-AIR PHOTOGRAPHY

Official air-to-air photography

Zigermeet19 will be offering arriving aircraft the opportunity for professionally organized air-to-air pictures from the OV-10 Bronco during arrivals and pre display training flights on Thursday, August 15th and Friday, August 16th. Pictures will be shared with participating crews. No fees apply, but please pre-arrange your airborne slots directly with Peter Lewis as soon as possible:

E-mail: goatworks@mac.com

Mobile: +41 79 416 14 01



DISPLAY ORDER